

NAFE MEMBER NEWS

National Association of Forensic Economics

NAFE Member News
Volume 22, Issue 3
August 2008

President

Gary R. Skoog
Legal Econometrics, Inc.

Past President

Frank D. Tinari
Seton Hall University

Vice Presidents

Christopher J. Bruce
University of Calgary

Robert A. Bohm

University of Tennessee

David J. Schap

College of the Holy Cross

Edward Foster

University of Minnesota

At Large Vice Presidents

Gary R. Albrecht
Albrecht Economics, Inc.

Marc Weinstein

Team Economics, LLC

Executive Director

James D. Rodgers
Pennsylvania State University

Production Editor

Nancy L. Eldredge

President's Message

Fellow NAFE Members,

Your Board of Directors (for your convenience, listed on the letterhead immediately to the left) met July 23-24 at a Holiday Inn in Calgary, Alberta, Canada. The location was chosen in Chris Bruce's province and to honor his three years of great service as NAFE's Western Vice President. All Board Members, Past President Frank Tinari, and our Editor Emeritus Jack Ward attended, as did Co-Editor Mike Piette by telephone for his portion.

As I announced on the NAFE-L, Mike Piette informed me in June that, after serving as co-editor of the *Journal of Forensic Economics (JFE)* since about 2001, he wishes to pass his duties on to another person. I thank Mike on behalf of all NAFE members for his exceptional service to our organization. Mike served several years as editor before the *JFE* and *LER* merged, at which point Steve Shapiro joined him from the *LER* side. Mike will continue until we find a suitable replacement. Co-Editor Steve Shapiro will continue, and will chair the committee appointed by the Board to locate Mike's replacement. Also serving on this search committee will be Mike Piette, Emeritus Editor Jack Ward and myself. If you are interested in serving in this important position, or have an idea for a good and willing replacement, please let the committee chairman know – an announcement appears separately in this newsletter.

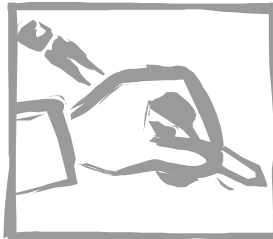
Another important development concerns the recommendation of the Nominating Committee (David Rosenbaum, chair, Marianne Inouye, and David Jones) for replacing Vice-Presidents whose three-year term expires. The Board accepted their recommenda-

tions: James Ciecka as Mid-Western Vice-President and Boyd Fjeldsted as Western Vice-President. I heartily endorse both of these persons. If anyone ranked authors of forensic economics papers by publication numbers, let alone importance, Jim would be in the very top group. I have worked closely with him for a number of years, and can say without reservation that NAFE will profit immensely from his wise counsel as a future Board member. Similarly, Boyd has a strong publication record in forensic economics, and I have appreciated his thoughtful papers and his presentations, often at the AAEFE meetings in Las Vegas. We are fortunate to have two such exemplary candidates. Their names, along with any others submitted in accordance with the bylaws, will appear on the ballots sent to the membership in early November.

Chris Bruce again organized very successful meetings at the Western Economic Association meetings, this year in Honolulu, Hawaii, where we had 6 sessions, attended by 30 or so people. In light of the required time to fly there, the attendance held up well. Our remaining 2008 meeting will be the Southern, in Washington, D.C. Saturday, November 22.

The NAFE sessions at the next ASSA meeting, in San Francisco, have been ably organized by William Pearson with assistance from Boyd Fjeldsted. The four NAFE sessions are now subscribed with interesting papers and discussants. The highlight of these sessions will be a presentation at 2:30 p.m. on Sunday, January 4, our last session, by Nobel Laureate James Heckman. We expect a large crowd for this session, and hope to see you there. For those of you who have not attended our meetings, this would be a great starting point. In addition to learning from your colleagues in the formal sessions, the cocktail parties provide you with a wonderful opportunity to network with your colleagues.

Gary R. Skoog



NAFE
P.O. Box 394
Mount Union, PA 17066
Phone: (866) 370-6233
Fax: (814) 542-3253
nancy@nafef.net
http://NAFE.net

South 2008—Washington, DC

**SOUTHERN ECONOMIC ASSOCIATION
WASHINGTON, DC—NOVEMBER 20-22, 2008
Organizer: Robert A. Bohm, Vice-President, Southern Region**

The 78th Southern Economic Association (SEA) will have their annual meeting November 20-22 2008 at the Grand Hyatt in Washington, DC. NAFE will have one session at the 2008 annual meeting of the Southern Economics Association. The NAFE session is Saturday, November 22, 2008, 2:00-3:45 p. m. in the Independence Room.

**Saturday, November 22
2:00 PM—3:45 PM**

**Topics in Forensic Economics, National Association of Forensic Economics
Chair: James D. Rodgers, Pennsylvania State University**

Papers:

Labor Market Access and its Impact on Lifetime Earnings,
David I. Rosenbaum and Ryan Gorka, University of Nebraska - Lincoln
The Appropriate Calculation of Personal Consumption Deductions in Two-Adult-Earner Households,
Michael L. Brookshire, Marshall University and Frank Slesnick, Bellarmine University
Forensic Economics Potpourri, Patrick Fitzgerald, Oklahoma City University

Discussants:

David Schap, College of the Holy Cross
David Rosenbaum, University of Nebraska - Lincoln
Russell Lamb, Econ One Research, Inc.

Proposals for the 2009 meetings may be submitted at anytime. Please consider organizing a session. We would like to have at least three next time. Send your ideas to rbohms@utk.edu

Information about the SEA can be found at <http://www.etc.edu/Outreach/SouthernEconomicAssociation>.

Journal of Forensic Economics Co-Editor

Michael Piette has indicated to the NAFE Board of Directors that he would like to step down as co-editor of the *Journal of Forensic Economics (JFE)*. Mike has provided leadership to the *JFE* since 2001 and his efforts have resulted in the *JFE* continuing to be a quality peer-reviewed journal. The NAFE Board has appointed a search committee that includes the following members: Steven Shapiro (Chair), John Ward, Gary Skoog and Michael Piette. The search committee will be recommending a new Co-editor, who will work with Steve Shapiro, who plans to continue as Co-editor of the *JFE*. Individuals who are interested in being considered for the Co-editor position should contact Steve Shapiro (sshapiro@analyticresources.com or 203-397-8935).

National 2009—San Francisco

ALLIED SOCIAL SCIENCE ASSOCIATIONS SAN FRANCISCO—JANUARY 3-5, 2009

Organizers: William Pearson, Spectrum Economics and Boyd Fjelsted, University of Utah

The 2009 ASSA Meetings will be held January 3-5, 2009, Saturday, Sunday and Monday in San Francisco. There will be four NAFE sessions, which are listed below. Please note the date and times for the NAFE Board meeting, NAFE members meeting and the NAFE Reception below. Contact information for booking a room and registering for the meeting will be available September 4, 2008 on the ASSA web site: http://www.vanderbilt.edu/AEA/Annual_Meeting/index.htm

Saturday, January 3

NAFE Board Meeting	11:30 AM—2:15 PM
NAFE Membership Meeting	5:00 PM—5:30 PM
NAFE Reception	6:00 PM—8:00 PM

Forensic Economics I **2:30 PM**
Presiding: Frank D. Tinari, Tinari Economics Group

David D. Jones, Economic Consulting Services, LLC, “The ABC's of Life Expectancy and Mortality Adjustment.”

Gary R. Skoog, Legal Econometrics, Inc. and DePaul University, and James E. Ciecka, DePaul University, “New Developments in Worklife Expectancy.”

Mark W. Erwin, William M. G. Pearson, Spectrum Economics, Inc., “Estimating Lost Secondary Childcare in Wrongful Death Cases With the American Time Use Survey.”

Discussants:

Boyd L. Fjelsted, University of Utah
Edward Foster, University of Minnesota
Stephen M. Horner, Economic Consulting

Sunday, January 4

Forensic Economics II **8:00 AM**
Presiding: William M. G. Pearson, Spectrum Economics, Inc.

Patrick Anderson, Anderson Economic Group, LLC, “A Dynamic Programming Approach to Estimating Commercial Damages When Real Options are Present.”

Melvin Hughes, Hughes and Associates, “Purchasing Power, Inflation and Pre-Judgment Interest.”

Semoon Chang, University of South Alabama, “Post-Katrina Condo Flipping amid Force Majeure in Coastal Alabama.”

Discussants:

Russell Lamb, Econ One Research, Inc.
Matthew Marlin, Duquesne University
Marc Weinstein, Team Economics, LLC

Forensic Economics III **10:15 P.M.**
Presiding: Elizabeth Gunderson, Hamline University

James E. Ciecka, DePaul University, “Francis Galton: Regression to the Mean.”

Kevin E. Cahill, Analysis Group, Michael D. Giandrea, US Bureau of Labor Statistics, Joseph F. Quinn, Boston College, “Retirement Patterns and Determinants among Individuals with Erratic Work Histories.”

Thomas R. Ireland, University of Missouri, St. Louis, “Different Methods Used to Derive Hedonic Damages in Litigation.”

Discussants:

David Schap, College of the Holy Cross
Barry Ben-Zion, Consulting Economist
Kurt V. Krueger, John Ward Economics

Forensic Economics IV **2:30 PM**
Presiding: Gary R. Skoog, Legal Econometrics, Inc. and De Paul University

Invited Address: James Heckman, University of Chicago, “Economic Analysis of the GED Credential”

NAFE Winter Meeting 2009—St. Thomas

**TENTH NAFE WINTER MEETING
ST. THOMAS—JANUARY 30 AND 31, 2009**

Organizer: Jim Rodgers

Deadline for Hotel Room & Registration Fees: October 15, 2008

Jim Rodgers is putting together the 10th NAFE Winter Meeting on the island of St. Thomas. The conference will take place at the Marriott Frenchman's Reef and Morningstar Resort. Paper abstracts and/or roundtable/panel discussion proposals are invited for four sessions, two each on Friday and Saturday mornings, January 30 and 31, 2009. Discussants and session chairs are also being sought for these sessions. Submit abstracts of papers, roundtable session proposals, and offers to serve as a session chair or discussant to Jim Rodgers by December 1, 2008. The address is:

James D. Rodgers
237 Timberton Circle
Bellefonte, PA 16823
814-355-4944 Fax: 814-355-0530
jdr@psu.edu

The Frenchman's Reef Marriott is located on the southern coast of St. Thomas about 6 miles SE of the airport at 5 Estate Bakkeroe, St. Thomas, 00801, Virgin Islands (US). Phone: 1-340-776-8500; Fax: 1-340-715-6193. The web site of the hotel is:

<http://www.marriottfrenchmansreef.com>

For all room reservations, contact Sandy Berardis at Centre for Travel, 114 Heister Street, State College, PA 16801, by calling 1-800-255-2140, Ext. 121. Sandy's email address is sandy@cftrav.agencymail.com. The registration fee for NAFE members attending the conference is \$100.00. This fee is levied to cover the cost of the breakfast to be served in the conference room before the start of the session each morning, a travel agency fee of \$25.00 per registered conference attendee, and to cover any other charges associated with the conference room. There is no registration fee for spouses or others traveling with a NAFE member. The cost of a hotel room at the conference hotel will be \$350.00 per night for either a single or a double room. This room rate includes all taxes and a housekeeping fee and incidental charges for baggage handling. This room rate is available for the nights of Thursday, January 29 through Saturday, January 31, and, subject to availability, for the previous Monday through Wednesday nights, January 26-28, and for three nights (Sunday, Monday and Tuesday) following the meeting, February 1, 2, and 3. However, the hotel is more or less fully booked during this time of the year. Attendees should make their hotel reservations through Sandy Berardis, rather than on their own, as the room rate we are given by the hotel and the free conference room the hotel provides are based on a guarantee of a minimum number of room nights being sold. If you wish, Sandy can also make your airline and car rental reservations. Hotel room charges and the registration fee must be paid in full by October 15, 2008. After this date, rooms may be booked on a space-available basis.

East 2009—New York City

**EASTERN ECONOMIC ASSOCIATION
NEW YORK CITY—FEBRUARY 27-MARCH 1, 2009**

Organizer: David Schap, College of the Holy Cross

CALL FOR PAPERS

The 2009 Meetings of the Eastern Economic Association will be held at the Sheraton New York Hotel and Towers in New York City. The specific dates are February 27-March 1, 2009 (Friday to Sunday). Following past practices, four NAFE sessions are contemplated with the first one late Friday afternoon and the rest on Saturday. Anyone wishing to present a paper or serve as a discussant or session chair should contact David Schap (Eastern Region NAFE VP) at dschap@holycross.edu

Suggested topics for a panel discussion are most welcome as well. The site of the 2010 Eastern meetings will be in Philadelphia at a hotel not yet named. Updated information concerning the Eastern Economics Association conferences may be found at:

<http://www.iona.edu/eea/conferences/conferences.htm>

International 2009—Dubrovnik, Croatia

SIXTH ANNUAL NAFE INTERNATIONAL CONFERENCE
DUBROVNIK, CROATIA—MAY 21-MAY22, 2009
Organizers: Gail and Barry Ben-Zion

Deadline for Papers/Program Chairs/Discussants: ASAP

Ideas for paper presentations and names of volunteers for program chairs and discussants should be submitted to Barry **ASAP**. Registration fees should be sent to John Ward Economics at Ste. 235, 8340 Mission Road, Prairie Village, Kansas 66206. E-mail Gail and/or Barry at Gail@bbenzion.com and Barry@bbenzion.com.

The meetings will be held at the Dubrovnik Hilton Imperial, a five star hotel located just outside of the walls of the old city of what has been called the most beautiful city in Europe. These meetings will continue the format of past meetings in Edinburgh, Dublin, Florence, Sitges/Barcelona and Istanbul. Attendance will be limited to less than 20 attendees and the meeting format will be informal and interactive with both North American and European participants.

The Hilton rate is 195 E/205 E for single and double rooms + 10%VAT. A full breakfast buffet is included. We have rooms reserved for May 20- May 23, with availability both before and after the conference days.

The program sessions will be held from 8:30 am to 12 pm on May 21 and May 22. Sessions will cover methodologies in PI/Death, commercial and employment litigation, in North America and Europe.

The conference registration fee is \$300, which will cover conference facilities, coffees and lunches. Additional tour programs and activities will be announced at a later date. The **deadline for room registration is November 1**, but a limited number of rooms are available and early registration is encouraged. Gail and Barry Ben-Zion will be organizing the meetings this year. Please e-mail them if you have an interest in attending.

A registration form for the Hilton can be obtained by contacting nancy@nafe.net. The forms should be faxed to +385 20 320306 addressed to Ana Marijanovic.

West 2009—Vancouver, BC

WESTERN ECONOMIC ASSOCIATION INTERNATIONAL
VANCOUVER, BC—JUNE 29-JULY 3, 2009
Christopher Bruce, Vice-President, Western Region

The Western Economic Association International will have their 84th Annual Conference, June 29-July 3, 2009, in Vancouver, British Columbia. Ideas for paper presentations and names of volunteers for program chairs and discussants should be submitted to the NAFE office via nancy@nafe.net to be held for the incoming Western Vice President. More complete information will be available in the November NAFE News.

PAPERS PRESENTED AT NAFE-SPONSORED SESSIONS

MasterCard or Visa accepted

EMAIL (1 paper)	NAFE MEMBERS \$10	NON-MEMBERS \$50
EMAIL (full set)	NAFE MEMBERS \$25	NON-MEMBERS \$50
U.S. MAIL (1 paper)	NAFE MEMBERS \$5*	NON-MEMBERS \$30
U.S. MAIL (full set)	NAFE MEMBERS \$25	NON-MEMBERS \$50

* \$10 minimum Postage & Handling

For U.S. mail Allow 5-21 days for shipping

Allow 24 weekday hours on papers available for email

Order: nancy@nafe.net or 866-370-6233

FYI

Minutes of the National Association of Forensic Economics Board of Directors Meeting July 26-27, 2008 Calgary, Alberta

Voting members attending: Gary Albrecht, Bob Bohm, Chris Bruce, Ed Foster, David Schap, Gary Skoog and Marc Weinstein. Also attending: Mike Piette (by speakerphone for a portion of the meeting), Jim Rodgers, Frank Tinari and Jack Ward.

1. President Gary Skoog opened the meeting by welcoming everyone to Calgary.
2. Jim Rodgers presented the minutes from the Board meeting in New Orleans and the electronic meeting in April. It was moved and seconded (Albrecht, Bohm) that **the minutes of the January 4, 2008 meeting and the minutes of the April 5, 2008 electronic meeting be approved as presented.** The motion passed 7 – yes, 0 – no, 0 – abstain.
3. Rodgers presented the statement of income and expenses for December 2007 through May 2008, and the cash reconciliation statement for 5/31/2008. Revenues exceeded expenses for this period by a small amount and the cash balance position grew accordingly. It was moved and seconded (Weinstein; Bruce) that **the financial statements be accepted as presented.** The motion passed 7 – yes, 0 – no, 0 – abstain.
4. Rodgers reviewed the membership numbers as of June 30, 2008, pointing out that NAFE has 633 memberships and 66 subscriptions, for a total of 698 memberships and subscriptions combined. Rodgers provided a table showing the membership and subscription count since November of 2004. The problems arising from the movement of the handling of subscriptions to Allen Press in 2004 and 2005 seem to have been more or less completely resolved. The Board discussed the small number of library subscriptions and the large number of forensic economists who do not belong to NAFE, and some steps that might be taken to increase both membership and library subscriptions. Specifics are reported below under #16.
5. Bob Bohm discussed the upcoming Southern Economic Association meeting in Washington, D.C. There will be one NAFE session with three papers on Saturday, November 22, 2008. No NAFE sessions were held at the SEA in 2007 due to its close proximity in time to the New Orleans ASSA meeting.
6. David Schap wanted to have the minutes reflect his formal thanks to Larry Spizman for Larry's work in building attendance and session participation at the Eastern Economic Association meetings. Last year's NAFE sessions in Boston were attended by as many as approximately 45 people. The next meeting of the Eastern Economic Association will be in New York City during the period February 27-March 1, 2009. One NAFE session will be held on Friday afternoon, February 27 and as many as three sessions will be held on Saturday, February 28.
7. Ed Foster reported that because there was not enough interest in participating at the last Missouri Valley Economic Association meeting, NAFE did not organize any sessions at this meeting.
8. Chris Bruce reported that the July 2008 Western Economic Association International (WEAI) meetings in Hawaii had 6 NAFE sessions, 19 people on the program and approximately 30 people in attendance in the sessions. Next year's WEAI meeting will be in Vancouver, and NAFE's sessions will be held on June 30 and July 1, 2009.
9. Jim Rodgers reported that the international NAFE winter meeting will be in St. Thomas, U.S. Virgin Islands, on January 30-31, 2009, at the Marriott Frenchman's Reef and Morningstar Resort. Last year's meeting was held in Curacao and had 7 participants.
10. Gary Skoog reported the plans for the NAFE sessions at the upcoming ASSA meeting in San Francisco, to be held January 3-5, 2009. The four NAFE sessions are being planned by William Pearson with the assistance of Boyd Fjeldsted. The highlight of these sessions will be a presentation at 2:30 p.m. on Sunday, January 4, by Nobel Laureate James Heckman. A large crowd is expected for this session, which will very likely be held in a different, larger room than the other three NAFE sessions scheduled for January 3 at 2:30 p.m. and at 8:15 a.m. and 10:00 a.m. on the morning of January 4. The NAFE Board luncheon, membership meeting and cocktail party will be held on Jan. 3.
11. Jack Ward reported on the European International meeting held in Istanbul, Turkey, in May, 2008, which was attended by 7 participants. Next year's meeting will be in Dubrovnik, Croatia, and it is being organized by Barry and Gail Ben-Zion. Ward also reported that Elsevier will be publishing a book under his and Robert Thornton's joint editorship about the content of the European conference programs. Also, a special issue of the *Journal of Forensic Economics* based on topics from the European meetings is being planned.
12. Ed Foster, as the NAFE Board representative on this year's Nominating Committee, presented the recommendations of the committee. The other members of the committee were David Rosenbaum (Chair), Mary Innouye, and David Jones. It was moved and seconded (Bruce, Weinstein) that **the recommendations of the Nominating Committee for James Ciecka as Mid-Western Vice-President and Boyd Fjeldsted as Western Vice-President be approved,** with votes of 7 – yes, 0 – no, 0 – abstain. These names, along with any others submitted in accordance with the bylaws, will appear on the ballots sent to the membership in early November.
13. In June of this year, Mike Piette sent a letter to President Skoog, indicating that, after serving as co-editor of the *Journal of Forensic Economics (JFE)* since 2001, he would like to pass on the co-editorship of the *JFE* to someone else, effective at the time a replacement is found. In advance of the summer Board meeting, Piette also sent a report regarding the *JFE*. This report was discussed at the meeting with Piette, who joined the meeting by speakerphone. Piette noted that submissions to the *JFE* have been declining, and this has been only partially mitigated by the state damage papers and special issues of the journal. The quality of papers submitted for publication has also been declining, as evidenced by a higher rejection rate, and there has been difficulty in finding referees and obtaining timely reviews. In view of these developments, the Board approved two motions. It was moved and seconded (Foster, Schap) that **effective with Vol. 21, the *JFE* will be published in one volume of at least two numbers (issues) per year.**

(continued on page 7)

FYI (continued)

(Continued -July 26-27, 2008 Minutes of the National Association of Forensic Economics)

This motion was approved by a vote of 7 – yes, 0 – no, 0 – abstain. It was also moved and seconded (Albrecht, Bohm) that **the Board of Directors appoints a search committee to recommend a co-editor of the *JFE* to replace Mike Piette. This committee will be chaired by Steve Shapiro and will also include Mike Piette, Gary Skoog and Jack Ward. In addition to bringing forth a nomination for co-editor, the committee is also authorized to make recommendations about the editorial structure of the *JFE* and to address issues of compensation and any other issues that may arise in its deliberations.** This motion was approved by a vote of 7 – yes, 0 – no, 0 – abstain.

14. Rodgers produced a written report regarding the state damage series of articles. Up through *JFE* Vol. 20, No. 1, twenty articles have been published. Five more articles are currently at some stage in the review process.
15. Rodgers led a discussion about the new Form 990 being introduced by the IRS for not-for-profit organizations. This new form will be used for the 2008 tax year, and these returns must be filed in 2009. The form requires that some new questions be answered about an organization's policies relating to governance, especially in regard to avoiding conflicts of interest and promoting transparency in regard to the organization's financial affairs. With assistance from Board members, Rodgers will be working with NAFE's accountant to make sure that policies are in place to permit responses to the questions that demonstrate compliance with IRS goals, policies, and regulations for not-for-profit organizations.
16. Gary Albrecht discussed plans for uses of the new NAFE brochure. Albrecht will be mailing the brochure to subscribers to the *Journal of Risk and Insurance*. This use of the brochure led to a discussion of how to identify other groups (e.g., practicing forensic economists who are not NAFE members, AAEFE members who are not NAFE members) and entities (libraries who do not subscribe to the *JFE*). The Board will be making a renewed effort to identify and attract new members and library subscribers through brochure mailings and subscription incentives, some of which will need to be coordinated with Allen Press.
17. Various possibilities for the location of the 2009 summer Board meeting were discussed. It was decided to have the next summer board meeting in Minneapolis on July 25 and 26, 2009.
18. There being no further business, the meeting was adjourned at 10:15 am, July 27.

Submitted by
James D. Rodgers, Executive Director
July 30, 2008

NAFE
National Association of Forensic Economics



The new NAFE brochure is now available.



Are you aware of all the benefits you receive from NAFE?

NAFE's attractive new brochure contains ample information about the advantages of NAFE membership and a membership form.

If you would like a number of them to pass on to prospective members please contact Nancy

via

nancy@nafe.net

866-370-NAFE

FYI (continued)

Nomination of Candidates for NAFE Board Positions

At the 2008 summer board meeting, the NAFE Board of Directors approved unanimously the recommendations of the Nominating Committee (composed of David Rosenbaum, Chair, Ed Foster, Mary Innouye and David Jones). The slate of candidates is listed as the “Board Nominations” on the form below.

Using the form below, another candidate for a Vice-president position can be placed on the ballot under the by-laws if nominating forms are submitted for that candidate by at least 20 members. If you wish to propose an alternative nominee for any of the listed slots, send your suggestion(s) using the form below to the NAFE office (P.O. Box 394, Mount Union, PA 17066) postmarked no later than October 1, 2008.

The official ballots will be mailed to NAFE members on or about November 1, 2008. The ballots will contain the names of the candidates recommended by the Nominating Committee and approved by the NAFE Board, and, in addition, any candidates qualified by the petition provisions described in Article Four, Section 2(c) of the NAFE by-laws. Accompanying the ballot will be some information about the professional qualifications and background of each candidate. The official ballot will also allow write-ins for each position being filled.

Returned official ballots postmarked no later than December 1, 2008, will be counted. The election results will be certified in December by the NAFE Executive Director and announced by the NAFE President at the 2009 membership meeting in San Francisco.

Any questions should be directed to the NAFE office by calling 866-370-6233, or by emailing nancy@nafe.net

Form for Submitting Alternative Nominations for NAFE Board Positions

Please return postmarked no later than October 1, 2008 to
NAFE, P.O. Box 394, Mount Union, PA 17066-0394

Mid-West Vice-President—3 year term (2009-2010-2011)

Board Nomination: James Ciecka

Alternative Nomination: _____

Western Vice-President—3 year term (2009-2010-2011)

Board Nomination: Boyd Fjeldsted

Alternative Nomination: _____

Print your name: _____

Signature: _____

Upcoming and Noteworthy

317-

American Academy of Economic and Financial Experts (AAEFE)

Annual Meeting

LAS VEGAS—March 18-20, 2009

The next annual meeting of the American Academy of Economic and Financial Experts will be held in The Westin Casuarina in Las Vegas, Nevada from March 18-March 20, 2009. The first paper presentation session will start at 6:00 p.m. on Wednesday, March 18th and run until about 8:30 p.m., after which we will have a reception. Two paper presentation sessions are scheduled for Thursday, the first beginning at 9:00 a.m. and the second at 2:00 p.m., with an AAEFE Board meeting during the lunch period. The annual membership meeting will begin at 5:00 p.m. and will be followed by a reception. There will be a Friday morning paper presentation session starting at 9:00 a.m. and we hope there will be a Friday afternoon session on the running of a forensic economics practice. Persons who would like to make paper presentations should request to be added to the agenda by calling Creighton Frampton at (215) 951-2820 or write to Creighton at frampton@philaU.edu.

AAEFE Web site: <http://aaefe.org/default.aspx>

AREA 2009 Annual Conference

American Rehabilitation Economics Association

Annual Meeting

CHICAGO—June 11-14, 2009

The 2009 AREA Conference will be held at the Ambassador East Hotel in Chicago, Illinois, from June 11-14, 2009. For further information please contact:

Margy Ashby at areaorg@cox.net or call 1-800-2732

AREA Web site: <http://www.a-r-e-a.org/>

Advertisement

Available from Expectancy Data

The Dollar Value of a Day, 2007 Valuation *NEW!*

Cost: \$159 + \$6 shipping (150 pages)

Healthy Life Expectancy, 2004

\$59 + \$6 shipping (90 pages)

Full-Time Earnings in the United States, 2007 *COMING SOON!*

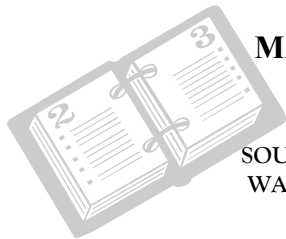
\$109 + \$6 shipping (206 pages)

See ExpectancyData.com for table of contents and sample pages

To order, telephone (877) 326-3282 or (913) 381-9420



Journal of Forensic Economics
P.O. Box 394
Mount Union, PA 17066-0394



MARK YOUR CALENDARS
(Details on meetings inside)

SOUTHERN ECONOMIC ASSOCIATION
WASHINGTON, DC—NOVEMBER 20-22

2009

ALLIED SOCIAL SCIENCE ASSOCIATIONS
SAN FRANCISCO—JANUARY 3-5

NAFE WINTER MEETING
ST. THOMAS—JANUARY 30-31

EASTERN ECONOMIC ASSOCIATION
NEW YORK CITY—FEBRUARY 27-MARCH 1

NAFE INTERNATIONAL
CROATIA—MAY 21-22

WESTERN ECONOMIC ASSOCIATION
VANCOUVER, BC—JUNE 29-JULY 3